

BUILDER'S SPOTLIGHT

ANTHONY MORTEZAI'S MOUNTAIN VIEW ESTATES AT PASHA COURT

With an illustrious background that celebrates a variety of architectural engineering achievements, Anthony Mortezaei, professional engineer and professional planner, brings a new dimension to residential land development and construction with the elite community of homes at Mountain View Estates at Pasha Court.

Mortezaei has created a strong reputation for upscale land developments for communities in New Jersey, which have captured the imagination of selective home buyers seeking more than just luxury. A civil engineer by profession, Mortezaei saw through the rock-laden cliff setting that would later become the beautiful canvas for the prestigious

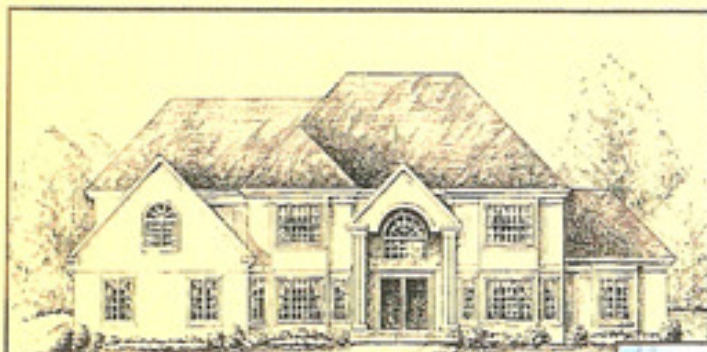


The Summit

Mountain View Estates at Pasha Court. Mortezaei accomplished a feat that no other builder would undertake when he transformed the land into a natural masterpiece, and turned rough rock into magnificent sculpture set off by a breathtaking cliff view of New York City. Taking advantage of this now lavish landscape, Mortezaei set the proportions between home and land to imbue this exclusive community with a great sense of serene privacy and beauty.

"From an engineer's point of view, it's all in the planning," says Mortezaei. Careful environmental analysis,

including drainage and flood improvement studies, and market analysis, land surveying, layout design and roadway improvements are various types of vital planning issues. Tony handles them



The Mt. Washington



AS SEEN IN UNIQUE HOMES



The Skyview

with the total mastery that is required for this complex science of land and community development.

In addition to a dramatic and unique cliffside location, the Mountain View Estates at Pasha Court offers four exquisite designs of newly constructed custom homes. The most discerning buyer can choose between The Summit, approximately 3,200 square feet; The Mount Washington, approximately 3,500 square feet; The Skyview, approximately 4,350 square feet; and the Grand Teton, approximately 4,400 square feet. Only the finest materials and appointments are featured in these custom estates, while beautiful landscaping decorates the entire community.

The exterior of the residences reflects dramatic architectural designs and elevations. Each design boasts such standard interior features as 9-foot ceilings on the first floor, recessed lighting in the kitchen, gorgeous raised-panel Masonite Colonial doors, a romantic tray ceiling in the master suite, ceramic tile floors, crown moldings in the formal dining room, the choice of oak or maple kitchen cabinets and Corian countertops, and wall-to-wall carpeting throughout.



The Grand Teton

Just 11 exquisite center-hall Colonials will grace this unique New Jersey address, where Mortezaei has managed to combine the best in design, location, views and artistry.

For more information on this community or Mortezaei, please contact:



Century 21 Gemini LLC Realty
337 Changebridge Road
Pine Brook, NJ 07058
973.263.2200

